



DIVING - on Pemba Island



About Dive 360 Pemba

A **five** star PADI dive center.

- **3** dive instructors.
- **1** dive master.
- **18** years of diving experience on Pemba.
- **Bauer** clean air compressor, certified.

The most experienced dive team on Pemba.

The diving around Pemba is nothing else but breathtaking. The untouched coral reef surrounding the entire island makes Pemba one of the top dive sites in the world. Pemba is the perfect place to start your diving adventure. One of the healthiest coral reef systems in the Indian Ocean, a water temperature of 26°C, and the best visibility in East Africa of 30 - 40 meters in the summertime. In combination with these great water conditions Dive 360 Pemba Dive Centre has everything you will need, including a great training pool in two levels, professional dive instructors to assist you with all your diving requirements.

THE DIVING

Some of the dive sites around Pemba are spectacular by any standards. The deep Pemba channel rises dramatically towards the island's west coast in near vertical walls along many of the reefs. Diving in this region is characterized by exceptionally clear, blue water drop-off's and vibrantly healthy shallow reefs. Hard and soft coral gardens support a proliferation of reef and pelagic fish and other marine life.

PADI ONLINE THEORY

For certifications, it is advised that the theory be completed online prior to arrival through www.padi.com/elearning-scuba-registraton/. Please register with "Dive 360 Pemba". Our dive centre number is 35453.

Pure clarity



Dive prices

TRAINING COURSES

PADI courses are not subject to commission.

Discover Scuba, 1 dive	\$130
Discover Scuba, 2 dives	\$160
Open Water Diver	\$540
Open Water E-Learner	\$440
Open Water Referral	\$330
Scuba Review course	\$130
Advanced Diver. Incl 5 dives.....	\$400
Private Dive Master	\$130 / day
Private Instructor.....	\$200 / day
Rescue Diver	\$400
Emergency First Response	\$270

FOR CERTIFIED DIVERS

Please note that proof of certification & insurance is required prior to diving commencement. Tanks and Weights only.

Near reef 1 dive	\$80
Far reef 1 dive	\$110
Near reef 2 dives	\$135
Far reef 2 dives	\$170

10% discount for divers with own gear, excluding the \$30 supplement for far reef dives

EQUIPMENT RENTAL

Wet suit	\$7
Regulator	\$7
BCD	\$7
Mask	\$3
Fins	\$5

BOAT TRIPS

House reef and nearby reefs	
Single boat trip, 1 tank dive	\$10
Single boat trip, 2 tank dive	\$15
Njao and Fundo Reefs Boat Excursion	\$50/person

DIVE PACKAGES NEAR REEF

House reef and nearby reefs	
6 dives: \$385	
10 dives: \$625	
16 dives: \$960	

Plus \$30 for FAR REEF dives as supplement

SNORKELLING

Snorkelling trips to nearby reefs, approximately 90 minute excursion. Equipment included in price.

Boat trip (nearby reef)	\$30 / person
Boat trip (Njao / Fundo Gap)	\$60 / person

Specials

40% on E learner open water course.

This offer applies if you do your Padi Open Water theory online prior to arrival through www.padi.com/elearning-scuba-registraton/

Please register with "Dive 360 Pemba". Our dive centre number is 35453.



Manta

1. Swiss reef

2. Shimba Hills

3. Shimba Wall

4. The Edge

5. Pole Pole Mountain

6. Scorpions Secret

7. House Reef

Coral Garden

North Wall

South Wall

Slip stream

Jahazi Reef

8. Njao Gap

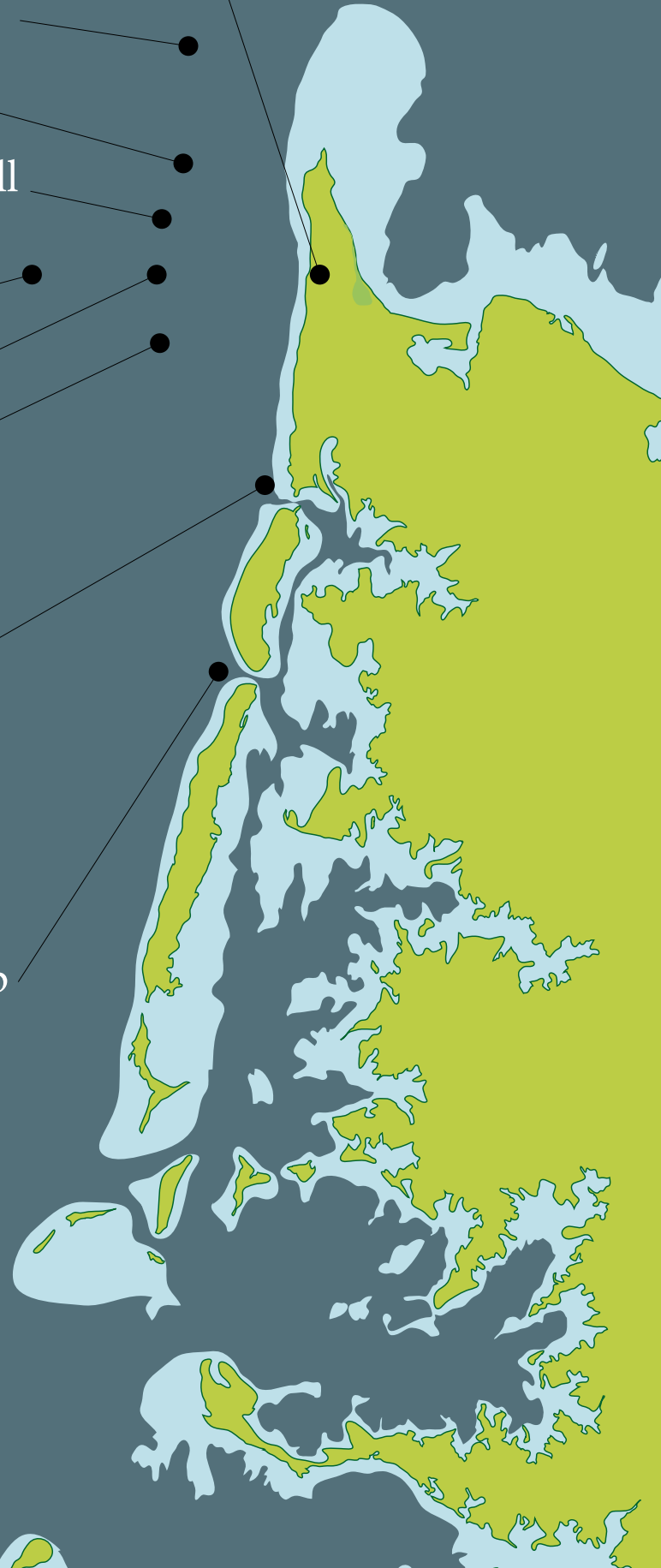
Mandela Wall

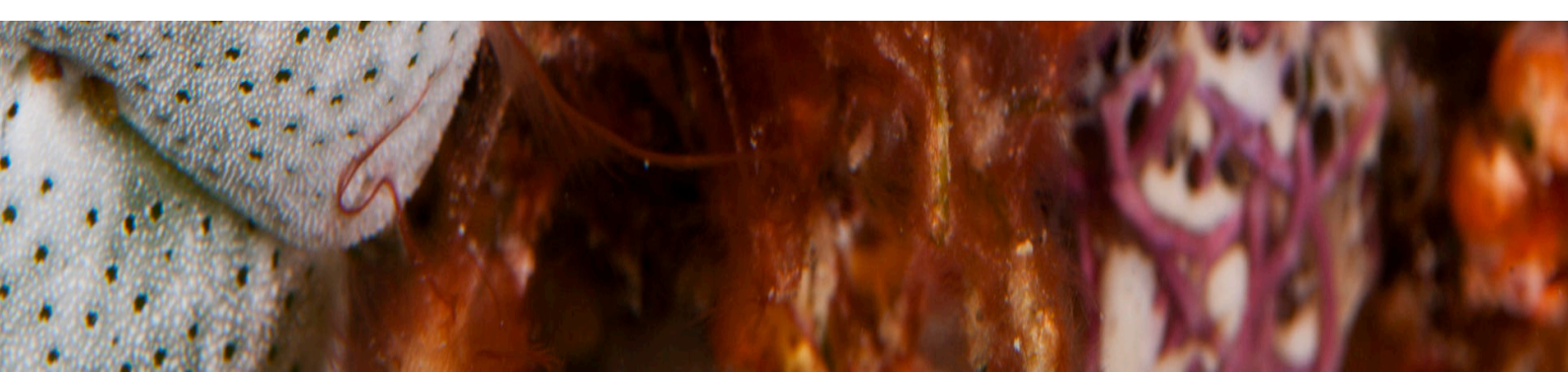
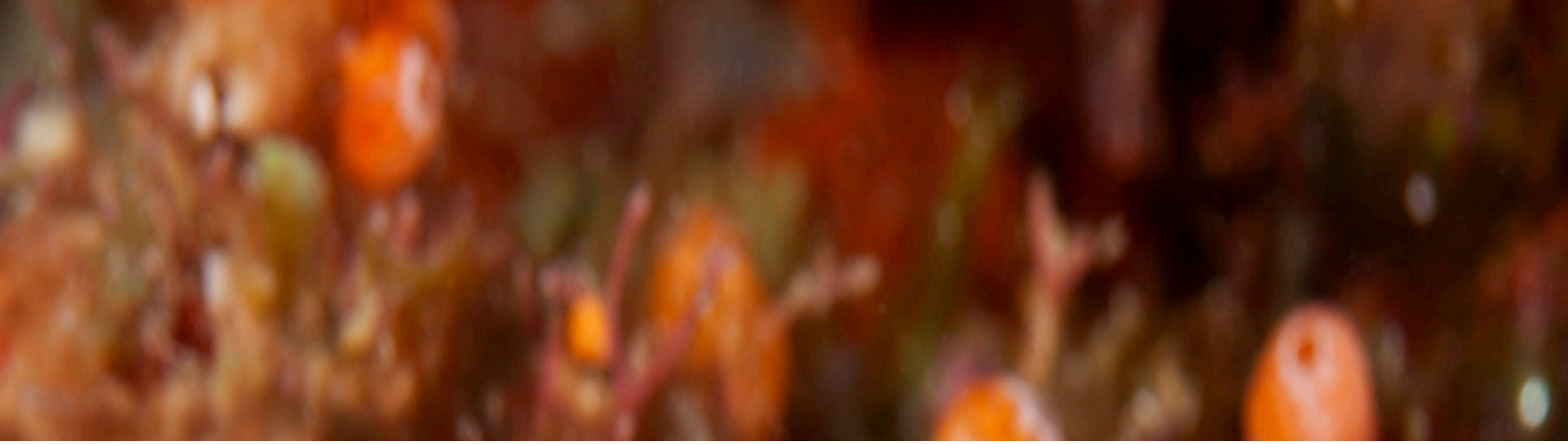
Pinnacle Coral

Garden Crack

South Wall

9. Fundo Gap





Dive sites

1. THE SWISS REEF - 3 DIVE SITES

System of sea mountains running parallel to the wall on a platform 25 m down. The mountains have different profiles; from just a few meters up to 100 m long. The thing to do here is drift dive over the system from one mountain to another, discovering the amazing reef life. Good chance of seeing big pelagic and turtles.

Recommended for: Experienced divers.

2. SHIMBA HILLS - 2 DIVE SITES

The last corner of the Shimba Wall breaks into two and forms a valley at 12 m depth with sand bottom with lots of barrel sponges and anthias, red sea sweatlips, fusiliers, red tooth triggerfish, etc.

Recommended for: Novice Divers

3. SHIMBA WALL

A gentle sloping wall, starting at about 6 m and runs parallel to the island for about 500m. Connecting with Shimba hills. The Max depth of 25 m making this suitable for Advanced divers. Noted for its red tooth trigger fish, nudibranches and leaf fish to name but a few.

4. THE EDGE - 5 DIVE SITES

Just west of the north-western peninsula. This is the last wall before Pemba island drops into the Pemba channel The wall starts at 30 meters and falls down steep! On the top of the wall huge barrels sponges and spirals corals grow up to two meters high. This is a great place for encounters with Napoleon fish, potato grouper, cubera snapper, big pelagic, turtle and even white tip shark.

Recommended for: Deep divers certificate apply. Strong currents occur.

5. POLE POLE MOUNTAIN

Mountain of coral that lumes from 30 m to 16 m, the base of the mountain is scattered with smaller hills of coral, with lots of spotted sweet lips, nudibranches and turtles, this site is for experienced AOW divers and above, and can only be dived at slack tides.

6. SCORPIONS SECRET

Situated a 2 min boat ride from the resort a gentle sloping wall starting at 5 m down to 18 m. Clear visibility and gentle currents make this site perfect for novice divers (DSD and OW) and snorkelers alike, as well as night dives. Well know for its camouflaged scorpion fish. Leaf fish, lion fish and giant frog fish.

7. HOUSE REEF

Right on the entrance to the manta resort coming from the ocean, an open patch of sand at 5m with superb visibility, flowing into big coral bomies filled with tropical fish and nudibranches, is perfect for snorkelers and divers of all levels, as well as night dives, Keep an eye out for large eye squid and octopus.

8. NJAO GAP - 5 DIVE SITES

A 30 min boat ride from the resort, Njao Gap which separates Njao island from the main island, you will find 5 different dive sites (Coral Garden, North Wall, South Wall, Slip stream, Jahazi Reef)ranging from 5 m to 40 m with sheer walls, mountains and coral gardens. This site focuses on good visibility, a massive variety of hard and soft coral, strong currents and a healthy vibrant range of marine life for example, Titan trigger fish, Napoleon wrasse, green turtles, giant trevally and dog tooth tuna, to name but a few, on the deeper dives we have been known to see white tip reef sharks, the sites are suitable for divers and snorkelers of all levels

9. FUNDU GAP - 5 DIVE SITES

Situated South of Njao island about a one hour boat ride from the resort Fundu Gap separates Fundu island and Njao island. The 5 dive sites (Mandela Wall, Pinnacle, Coral Garden, Crack, South Wall) at Fundu range from 5 m to 40 m and allows for clear visibility, strong currents and large coral formations. These sites are better know for their larger fish species such as Eagle rays, Napoleon's, GT's and Barracuda. The deep drop-offs and cooler waters allow for amazing soft coral growth such as Gregorian sea fans and anemone cities. The Macro life on these softer coral gardens is phenomenal and is suited for all levels of diver and snorkeler, U/W photography is a must.



THE MANTA

PEMBA ISLAND - ZANZIBAR